

QUEEN'S
THEATRE
HORNCHURCH

WHAT'S ON

AUTUMN
2025





Handbagged - 2025, QTH -
Photo: Manuel Harlan

Welcome



Welcome to our jam-packed autumn/winter season!

As a registered charity, Queen's Theatre Hornchurch is proud to be the cultural heart of our region – creating bold, inspiring theatre, unforgettable live entertainment and meaningful learning opportunities rooted in our community.

Whether you're after feel-good fun, a treat for the whole family, or something to surprise and entertain, there's a great night out for everyone this season.

Headlining our autumn, we're delighted to be producing **Di and Viv and Rose** with Theatre by the Lake – a powerful, funny, and heartfelt story of friendship and messy lives across the decades, soundtracked by hits from the 80s, 90s, and Noughties.

If you're looking for a thrilling adventure, join us for **Sherlock Holmes: The Hunt for Moriarty**, brought to life by the brilliant Blackeyed Theatre. Or, if you want to go to a dazzling Bollywood Ball, then our friends at Rifco will make your dreams come true with **Surinderella**. And if it's a punchy comedy you're after, **Teechers** from Eastern Angles Theatre Company and New Wolsey Theatre is just the ticket!

For those looking for ghostly chills, **Shock Horror** brings cinema's greatest frights alive on stage – be prepared for shivers, shrieks and shocking revelations by the team at Thunder Road!

Families are in for a treat too, with **The Singing Mermaid** and the delightful **Stick Man** on our main stage, plus a brand-new Saturday morning series of fun-filled children's entertainment on our foyer stage.

Of course, no Christmas would be complete without panto – and this year's is set to be a GIANT! For those young and young at heart, our homegrown **Jack and the Beanstalk** will be bigger than ever. Expect a classic tale of magic and adventure, original songs, glittering sets, fun and plenty of silliness – it's everything you need for a festive treat!

Alongside this, we're proud to host the best in live music and entertainment currently touring the UK, with our huge range of visiting shows.

And don't forget to visit our fabulous café and bar! Open throughout the day, serving coffees, lunches, and afternoon teas alongside pre-show drinks – it's the perfect spot to relax and refuel.

Last year, over 95,000 people visited us to experience live performance, and a further 35,000 took part in one of our many community participation activities. So don't miss out – there's a **great night out on your doorstep**.

James Watson
Acting Chief Executive



Supported through public funding by
**ARTS COUNCIL
ENGLAND**



Havering
COUNCIL



**Esmée
Fairbairn**
FOUNDATION

Queen's Theatre Hornchurch | Billet Lane | Hornchurch | RM11 1QT

Havering Theatre Trust Limited established in 1953. Registered in England
No 524845. Registered Charity No 248680. VAT No 246 7715 38.
All information correct at the time of printing



This classic story by Julia Donaldson and Lydia Monks, adapted for the stage with enchanting puppets by Lyndie Wright and music & songs by Barb Jungr, is a perfect piece of theatre for 3 to 8 year olds and their families.

The singing mermaid is tempted away to join a travelling circus, with the promise of a life of excitement (and her own swimming pool!). The audiences love her singing, but we soon find out she's been tricked by the dastardly circus master.

Will she ever escape? And who will help her along the way?

With a cast of three talented performers, enchanting puppets, and music & songs by Barb Jungr (*We're Going On A Bear Hunt*,

Michael Rosen's Chocolate Cake), Julia Donaldson and Lydia Monks' much-loved story comes to the stage.

🕒 28 – 30 Aug

🎫 £16* adult | £14* child | £14* groups of 10+
£56* family ticket offer (2 adult & 2 child or
1 adult 3 child) | Ages: 3 – 8

📍 Auditorium

ACCESS DETAILS

Relaxed Performance | Thu 28 Aug 2pm

We have Essential Companion tickets available to our disabled patrons. Please see the website for full details.

Watershed Productions presents the Little Angel Theatre and Royal & Derngate, Northampton production.

A composite image featuring a silhouette of Sherlock Holmes in a top hat and long coat on the left, and the Big Ben clock tower on the right. In the center, a steam train is visible in a dark, misty landscape.

SHERLOCK HOLMES

THE HUNT FOR MORIARTY

"When you have one of the first brains of Europe up against you, and all the powers of darkness at his back, there are infinite possibilities"

London, 1901. As the British Empire wages war in the name of a Queen whose health is failing, a series of mysterious events reveals a crack in the high corridors of power. A crack that threatens to destabilise the Monarchy, Government, and Empire. And at its centre, controlling the flow of information and influence, a shadowy figure plans a final deadly move.

Drawn into the game and unsure who to trust, Sherlock Holmes and Dr. Watson find themselves confronting figures from their past in a desperate race against time, aware that the most powerful person in the world could be in the pocket of one of the most corrupt. But just how much is Holmes willing to sacrifice as he faces 'checkmate'?

A thrilling adventure based on the work of Sir Arthur Conan Doyle, *Sherlock Holmes: The Hunt for Moriarty* is a world premiere

combining powerful performances, a haunting soundscape and innovative design for an exhilarating theatrical experience.

"One of the most innovative, audacious companies working in contemporary English theatre" The Stage

🕒 16 – 20 Sep

🎫 £19* | £23.50* | £27* | £10 Under 26s | £12 Schools group | Ages: 11+

📍 Auditorium

ACCESS DETAILS

We have Essential Companion tickets available to our disabled patrons. Please see the website for full details.

Blackeyed Theatre in association with Theatre Royal Winchester and South Hill Park.

Adapted by Nick Lane from the work of Sir Arthur Conan Doyle

Composer – Tristan Parkes

Surinderella

BY
PRAVESH
KUMAR



INTO THE BOLLY-WOODS

Welcome to Bolly Woods, where the naach is non-stop, the drama is bigger than your aunties', and the romance is straight out of a filmy blockbuster!

Meet Surinder – sweet, strong, and stuck in a never-ending chore list thanks to her two selfie-obsessed, Insta-vlogging stepsisters, Lovely & Bubbly. Her only real support? The one and only Basanti, a cow with more attitude than a desi girl.

Meanwhile, Prince Kavi is drowning in shaadi pressure from his royal family. But when he accidentally bumps into Surinder, sparks fly faster than a Bollywood dance sequence!

Enter the fabulous Devi Godmother, arriving in full-on glam mode with magic, makeovers, and masala moves. With a dazzling Bollywood Ball, a mystical slipper,

and a lot of bakwas, Surinder's destiny is about to get a serious glow-up!

Get ready for an evening of laughter, romance, and larger-than-life entertainment!

🕒 30 Sep – 5 Oct

🎫 £20* – £32* adult | £16* – £28* child
£13 schools group

📍 Auditorium

ACCESS DETAILS

We have Essential Companion tickets available to our disabled patrons. Please see the website for full details.

British Sign Language Interpreted
Wed 1 Oct | 7pm

Live Audio Description
Sat 4 Oct | 1pm | Touch Tour | 12pm

Produced by Rifco Theatre & Wolverhampton Grand Theatre, in Association with Imagine Theatre and Watford Palace Theatre.

TEEACHERS

BY JOHN GODBER



Meet Gail, Hobby, and Salty – three year 11 students about to leave their school days behind them, fighting their anxieties with imagination and theatre.

As their final term nears its end, the trio perform a play inspired by the chaotic first days of their idealistic drama teacher. With only the props of their classroom to hand and just three actors taking on over 20 different roles, *Teachers* is a tour-de-force of storytelling and the power of live theatre.

Written by John Godber in the 1980s, *Teachers* is a fast-paced comedy with a vital message about the entrenched inequalities of the UK's education system that are still as punchy as ever forty years later.



"A brilliantly crafted show, full of comedy, charisma and heart" West End Best Friend

🕒 7 – 8 Oct

🎫 £18* | £22* | £26* | £8 Under 25s
£13 schools group | Ages: 12+

📍 Auditorium

ACCESS DETAILS

We have Essential Companion tickets available to our disabled patrons. Please see the website for full details.

An Eastern Angles Theatre Company and New Wolsey Theatre production.



Di and Viv and Rose

Back in the 80s, Di, Viv, and Rose are university housemates. Energetic and idealistic, they become friends – but where will life take them after that?

Filled with the iconic culture, fashion, and music of the 80s, 90s and Noughties, *Di and Viv and Rose* follows these three women through the messy complexity of adulthood, in a must-see celebration of the power of lifelong friendship.

Candid and full of humour, Di, Viv, and Rose talk about sex, ambition and love – sharing joyful moments, painful experiences, and some surprising secrets.

Di and Viv and Rose is written by award winning actor-writer Amelia Bullmore, best known for her portrayal of Steph Barnes in *Coronation Street* and her work in *Riot Women* (2025), *Happy Valley* (2016) and *Scott & Bailey* (2011).

ACCESS DETAILS

British Sign Language Interpreted
Fri 17 Oct | 7.30pm

Live Audio Described
Tue 21 Oct | 7.30pm | Touch Tour | 6.30pm

We have Essential Companion tickets available to our disabled patrons. Please see the website for full details.

A Queen's Theatre Hornchurch and Theatre by the Lake production.

🕒 16 – 25 Oct
Directors Talk | Fri 17 Oct | 6.30pm

🎫 £19* - £29* | £8 Under 26s
Ages: 14+

📍 Auditorium

Creatives

Writer

Amelia Bullmore

Director

Fay Lomas

Set and Costume Designer

Hannah Sibai

Lighting Designer

Jessie Addinall

Composer and Sound Designer

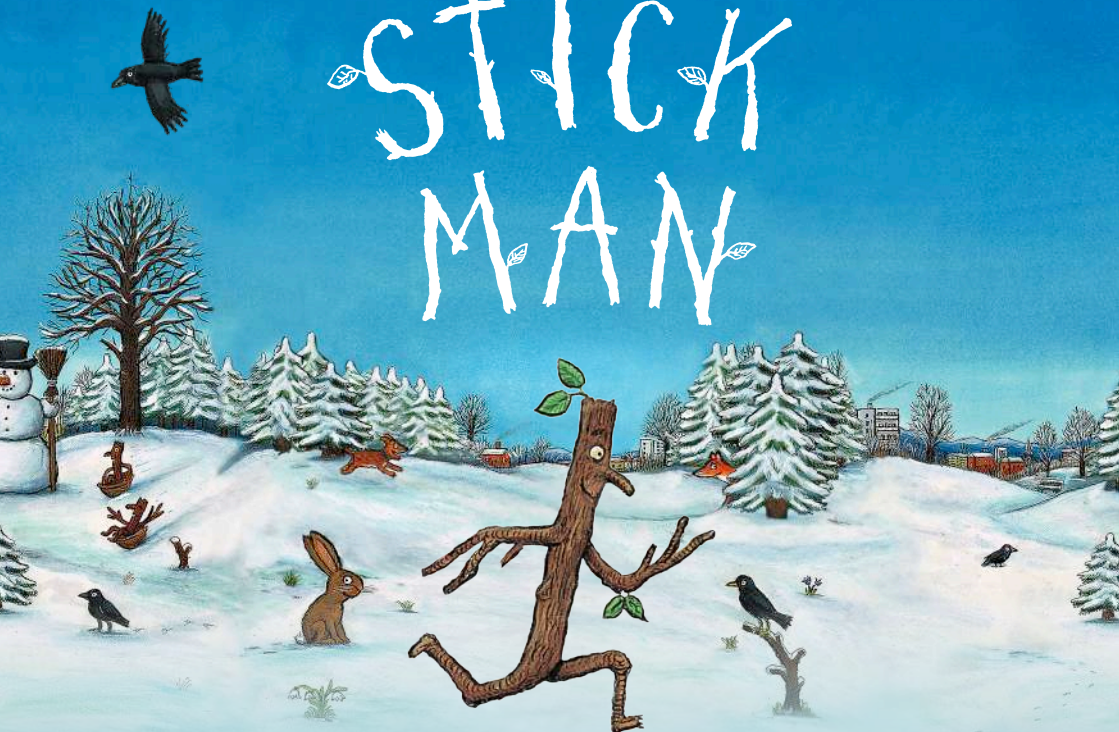
Lex Kosanke

Movement Director

Georgina Makhubele

JULIA DONALDSON * AXEL SCHEFFLER

STICK MAN



Touching, funny, and utterly original, Freckle Productions' delightful adaptation of Julia Donaldson and Axel Scheffler's *Stick Man* is back in town!

What starts off as a morning jog becomes quite the misadventure for Stick Man: a dog wants to play fetch with him, a swan builds a nest with him, and he even ends up on a fire! How will Stick Man ever get back to the family tree?

This award-winning production, from the team behind *Zog and Zog* and the *Flying Doctors*, features a trio of top actors and is packed full of puppetry, songs, live music and funky moves.

Stick Man © 2008 Julia Donaldson and Axel Scheffler.
Published by Alison Green Books, an imprint of Scholastic Children's Books.



"Wonderfully exuberant and imaginative! Our 3-year-old was engrossed from start to finish" Time Out Critics' Choice

🕒 31 Oct – 2 Nov

🎫 £16* adult | £14* child | £14* groups of 10+
£56* family ticket offer (2 adult & 2 child or 1 adult 3 child)

📍 Auditorium

ACCESS DETAILS

We have Essential Companion tickets available to our disabled patrons. Please see the website for full details.

A Freckle Productions presentation.

SHOCK HORROR

A GHOST STORY



A nightmare is about to break free...

Herbert grew up in the Metropol. The eerie old cinema was his playground and prison – a place where endless late-night horror films were his only window to the world.

But what lurked in the Metropol's darkness? Now Herbert's back at the abandoned cinema, and the real horror has only just begun...

Inspired by classic theatre ghost stories and cinema's greatest frights, *Shock Horror* is a chilling journey into a haunted past. Combining live performance and big-screen action, it's full of shivers, shrieks and shocking revelations.

Because we love a good horror film, don't we? Until we realise we're all alone in the dark...



"Brilliantly combining live performance, illusion and film" Theatre News



🕒 6 – 8 Nov

🎫 £18* | £22* | £26* | £8 Under 26s
Ages: 15+

📍 Auditorium

ACCESS DETAILS

We have Essential Companion tickets available to our disabled patrons. Please see the website for full details.

A Thunder Road production, supported by Arts Council England.

Jack and the Beanstalk



Fe-Fi-Fo-Fum, it's panto fun for everyone!

Join Jack and his mum in their family-run farm-shop, where business is down, the rent's overdue, and there's nothing left to do but sell Pat the Cow at Romford Market. Oh, and to top it off, there's a giant in the sky above Hornchurch, terrorising the town!

But when some magic beans take root, an adventure starts to grow...

Will Jack find the courage to climb to Cloudland, outwit the ferocious giant and save the town before it's too late?

Expect laughter, toe-tapping tunes and a happy-ever-after in this GIGANTIC festive family pantomime. It's the unmissable magical adventure you've all BEAN waiting for.

Oh yes it is!

ACCESS DETAILS

BSL interpreted | Sat 22 Nov | 6.30pm | Wed 3 Dec | 6.30pm || Mon 29 Dec | 2pm

Live Audio Description | Sat 29 Nov | 2pm (touch tour 12.30pm)

Captioned | Tue 16 Dec | 6.30pm

Dementia Friendly | Thu 18 Dec | 1pm

Relaxed (SEN friendly) | Thu 18 Dec | 5.30pm

A Queen's Theatre Hornchurch pantomime.

** Under 18s, Income Support

We have Essential Companion tickets available to our disabled patrons. Please see the website for full details.

BSL – British Sign Language Interpreted

CAP – Captioned

AD – Audio Described | TT – Touch Tour

RX – Relaxed (SEN friendly)

DF – Dementia Friendly

November 25

Wed 19	-	-	6.30pm
Thu 20	-	-	6.30pm
Fri 21	-	-	6.30pm
Sat 22	-	2pm	6.30pm BSL
Tue 25		1pm School	6.30pm
Wed 26	10am School		
Thu 27	10am School		
Fri 28	10am School		6.30pm
Sat 29		2pm AD +TT	6.30pm
Sun 30		12.30pm	5pm

December 25

Tue 2			
Wed 3	10am School		6.30pm BSL
Thu 4	10am School	2pm School	
Fri 5	10am School		6.30pm
Sat 6		2pm	6.30pm
Sun 7		12.30pm	5pm
Tue 9	10am School		
Wed 10	10am School		6.30pm
Thu 11	10am School		6.30pm
Fri 12	10am School BSL		6.30pm
Sat 13		2pm	6.30pm
Sun 14		12.30pm	5pm
Tue 16		1pm School CAP	6.30pm CAP
Wed 17	10am School		6.30pm
Thu 18		1pm DF	5.30pm RX
Fri 19		2pm	6.30pm
Sat 20		2pm	6.30pm
Sun 21		12.30pm	5pm
Tue 23		2pm	6.30pm
Wed 24	11am	3.30pm	
Fri 26		2pm	6.30pm
Sat 27		2pm	6.30pm
Sun 28		12.30pm	5pm
Mon 29		2pm BSL	6.30pm
Tue 30		2pm	6.30pm
Wed 31	11am	3.30pm	

January 26

Fri 2		2pm	6.30pm
Sat 3		2pm	6.30pm

PURPLE	£13*				
BLUE	£13*	£18*	£21*	Access price £13*	
GREEN	£21*	£25*	£28*	Access price £21*	Discounts £4 off**
RED	£24*	£28*	£32*	Access price £24*	Discounts £4 off**
GOLD	£26*	£30*	£34*	Access price £26*	
PLATINUM	£28*	£32*	£36*	Access price £28*	

Group Booking Discounts: Mixed groups of 50+ (registered organisations only, valid for Blue and Green Performances). £13* Blue Performance | £17* Green Performance

Children aged under 36 months do not require a seat or ticket and may sit on an adults lap.

FAMILY EVENTS



Milkshake! Live On Holiday

Join Smurfette, Dora, and other Milkshake! friends.

🕒 Thu 24 Jul 12pm | 3.30pm

🎫 £17.50* adult | £16.50* child
£64* family ticket offer
(2 adult & 2 child or 1 adult
3 child)

📍 Auditorium



Summer School – Play in a Week

Looking for something to keep you busy during the summer holidays? Join us for a fun week of drama, games and acting.

🕒 4 Aug – 8 Aug 10am – 3.30pm

🎫 £125* | Ages 7 – 13 years

📍 Learning Space



Light Fantastic!

Thirty years after their ill-fated gig at the school science fair, will sparks fly at Iris and Rod's reunion concert? A musical comedy about light, science and friendship.

🕒 Sun 7 Sep 12.30pm | 2.30pm

🎫 £12* adult | £10* child

📍 Auditorium



Living Things Wildlife Show

The animal wildlife show educates your children in a hands-on, visual, fun and exciting way.

🕒 Sat 13 Sep 10.30am

🎫 £10* adult | £8* child
Ages 4+

📍 The Other Stage



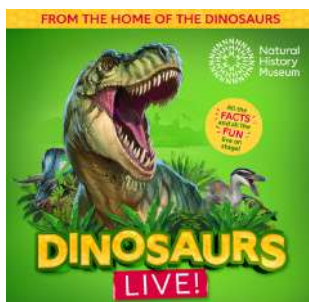
Family Knees Up

Fancy a change from nursery rhymes? Grab your little ones, bring your nan and join us for some songs at the Ol' Johanna!

🕒 Sat 27 Sep 10.30am

🎫 £10* adult | £8* child | Under 1's free

📍 The Other Stage



Natural History Museum presents Dinosaurs Live!

We'll go on a pre-historic journey together to the Triassic, Jurassic, and Cretaceous periods.

🕒 Mon 27 Oct 12.30pm | 3.30pm

🎫 £16* adult | £14* child Ages 3+

📍 Auditorium



Ministry of Science

Join our presenters as they dive deep into the world of science and look at how science shapes the modern world we live in.

🕒 Wed 29 Oct 1.30pm

🎫 £17* adult | £15* child | £60* family ticket offer (2 adult & 2 child or 1 adult 3 child)

📍 Auditorium



Baby Broadway Christmas

Enjoy classic songs from Elf, White Christmas, The Snowman, Frozen, and more. Festive fancy dress is encouraged.

🕒 Sat 6 Dec 9.45am | 11am

🎫 £12* adult | £10* child | Under 1's free

📍 The Other Stage



The Elves and the Shoemaker

This joyful, interactive performance brings a sprinkle of sparkle, a dash of mischief, and a whole heap of heart.

🕒 Sat 13 Dec | Sat 20 Dec 10.30am

🎫 £7.50* | Under 1's free

📍 The Other Stage

**NEW SHOWS
ARE BEING
ADDED ALL
THE TIME**

Scan here to
see more



ONE NIGHT ONLY



Down Memory Lane

A show for people with Dementia & their Carers. A happy, nostalgic afternoon, in tribute to Kay Carman.

🕒 Wed 16 Jul | Wed 17 Sep
Wed 15 Oct | Wed 12 Nov
Mon 8 Dec | Wed 14 Jan
2.30pm

🎫 £10* inc. tea/coffee
carer free

📍 The Other Stage



Comedy Club

The biggest stars of stand-up came here on their way to stratospheric fame. See the stars of tomorrow, right now, on your doorstep!

🕒 Wed 16 Jul | Fri 5 Sep
Wed 15 Oct | Wed 12 Nov
Wed 7 Jan | 8pm

🎫 £15* | £12* conc. | Ages 16+

📍 The Other Stage



Sweet & Sour

Get ready for a night of pop anthems, heartbreak hits, and fierce rival vibes at Sweet and Sour – the ultimate Olivia Rodrigo vs. Sabrina Carpenter tribute!

🕒 Fri 1 Aug 7.30pm

🎫 £26*

📍 Auditorium



The Glam Rock Show – Get It On

Step into the ultimate glam rock experience, we're bringing you the biggest hits from T. Rex, Slade, Bowie, Sweet, Suzi Quatro, and more.

🕒 Sat 2 Aug 7.30pm

🎫 £23* | £25* | £29*

📍 Auditorium



Ms Amber Guity's Drag Bingo

Self-proclaimed drag legend and Dabbers Next Top Bingo Caller semi-finalist, Ms Amber Guity, returns with her SELL-OUT Drag Bingo show.

🕒 Fri 29 Aug | Sat 1 Nov 7.30pm

🎫 £15* | £12* conc. | Ages 16+

📍 The Other Stage



Dysbiosis

A queer-led multimedia performance unearthing our tangled ties to nature and environmental justice in a radical act of collective imagining.

🕒 Sat 6 Sep 2pm | 5pm | 8pm

🎫 £8* | £12* | £16* | Ages 16+

📍 Auditorium



Canvey is England's Lourdes – A short film

A short piece of digital art about the mysterious life of Nora Arthurs and her quest to make her home a place of pilgrimage. Writing workshop on page 26.

🕒 Thu 11 Sep 7pm

🎫 FREE

📍 Auditorium



The Rock Anthems Show

Jump aboard the midnight train – as the greatest end-of-the-night anthems spectacular roars into town. Guaranteeing a crazy, crazy night of non-stop, sing-along favourites.

🕒 Fri 12 Sep 7.30pm

🎫 £23* | £25* | £29*

📍 Auditorium



Rat Pack Live!

Combining the full sound of big band swing with charisma and swagger, the trio collectively known as The Rat Pack invites you to be part of the gang.

🕒 Sat 13 Sep 2.30pm | 7.30pm

🎫 £23* | £25* | £29*

📍 Auditorium



A Beautiful Noise with Fisher Stevens

Fully reimagines the timeless classics like *Sweet Caroline* and *Cracklin' Rosie* by blending legendary melodies with a fresh, vibrant presentation.

🕒 Sun 14 Sep 7.30pm

🎫 £28*

📍 Auditorium



Lipstick On Your Collar

Get your dancing shoes at the ready, grab yourself a milkshake and relax – you are in for an evening of back-to-back hits from the 1950s and 60s!

🕒 Mon 15 Sep 7.30pm

🎫 £27* | £30* | £32*

📍 Auditorium



Psychic Sally

Whether you know her from her TV series, Celebrity Big Brother or reading one of her best-selling books, there is nothing quite like seeing Sally live on stage.

🕒 Mon 22 Sep 7.30pm

🎫 £25* | £27* | £29* | Ages 12+

📍 Auditorium



Su Pollard: Still Fully Charged

An evening of hilarious stories from 50 years in show business, featuring songs, backstage secrets from her diaries, and maybe even familiar characters!

🕒 Tue 23 Sep 7.30pm

🎫 £27.50* | Ages 16+

📍 Auditorium



An Evening with Harry Redknapp

A night full of laughter, football stories and feel-good moments. Expect behind-the-scenes insights, hilarious anecdotes.

🕒 Wed 24 Sep 7:30pm

🎫 £35* | VIP £70* | Ages 14+

📍 Auditorium



ELE Playwriting Group – Fresh Scripts

A curation of new work written by playwrights based in East London and South Essex. Be the first to see their stories performed in this special rehearsed reading.

🕒 Mon 29 Sep 7.30pm

🎫 £10* | Ages 12+

📍 The Other Stage



Locomotive for Murder: The Improvised Whodunnit

A totally improvised, totally hilarious murder mystery Whodunnit where killing the cast and cracking the case is in your hands.

🕒 Thu 9 Oct 7.30pm

🎫 £18* | £22* | £26* | £8 Under 26s | Ages 8+

📍 Auditorium



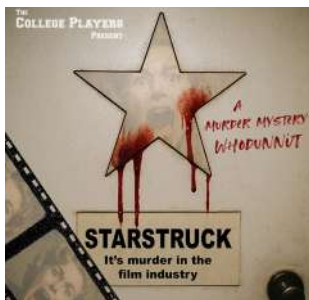
WHALE

A multimedia alternative comedy special that combines clowning, stand-up, and haiku poetry to explore how far we will go to avoid being honest about our feelings.

🕒 Wed 29 Oct 8pm

🎫 £10* | Ages 15+

📍 The Other Stage



Murder Mystery Evening

Your chance to play detective. Just as filming is about to start, a murderer strikes. The Police are left reeling and need you to help solve this puzzle.

🕒 Mon 3 Nov | Tue 11 Nov
7.30pm

🎫 £12* | ages 16+

📍 The Other Stage



Strange, But True Crime

A stranger than fiction night of true crime with ex-forensics lecturer Jennifer Rees, who explores the world's most shocking and unbelievable cases.

🕒 Tue 4 Nov 7.30pm

🎫 £26* | Ages 16+

📍 Auditorium



Most Haunted: The Stage Show

Yvette Fielding, Karl Beattie, and the Most Haunted team take you on a dark, terrifying journey as they present their all-time top scares.

🕒 Wed 5 Nov 7.30pm

🎫 £26* | Ages 14+

📍 Auditorium



The Funny Mummy

A hilarious comedy show about the world of parenting. From pregnancy to playdates, WhatsApp groups to school runs – if you need a laugh, it's for you!

🕒 Thu 13 Nov 7.30pm

🎫 £15* | Ages 18+

📍 The Other Stage



Christmas Memories

Don't miss an afternoon full of festive joy and heartwarming nostalgia, featuring over 60 of your all-time favourite Christmas songs and carols.

🕒 Mon 24 Nov 2pm

🎫 £20*

📍 Auditorium



Winter Fundraising Quiz Night

Challenge your friends with a fun and friendly night out. Filled with music, tricky questions and laughs. Food and drinks packages available.

🕒 Wed 26 Nov 7.30pm

🎫 £10*

📍 The Other Stage



The Magic of Motown

All the classic Motown hits in one show! There's glittering costumes, dazzling dance routines and outstanding musicianship in this live concert spectacular.

🕒 Mon 1 Dec & Tue 2 Dec 7.30pm

🎫 £33*

📍 Auditorium



Step Into Christmas

Packed with all your favourite Christmas classics, the show brings the spirit of the season to life with dazzling performances, stunning festive visuals, and a sensational live band.

🕒 Mon 8 Dec 7.30pm

🎫 £30* | £26* conc.

📍 Auditorium



80s Live

Travel back in time to one of the most iconic eras of music for the night out you have been dreaming of.

🕒 Mon 15 Dec 7.30pm

🎫 £23* | £25* | £29*

📍 Auditorium



The Last Days of Disco

A set list like no other show, classics from Irene Cara, Lipps Inc, Debarge, The Pointer Sisters, Shalamar, Stephanie Mills, Stacey Lattishaw, Chic, Earth Wind and Fire and more.

🕒 Mon 22 Dec 7.30pm

🎫 £27*

📍 Auditorium



Dreamboys

With heart-pounding choreography, feel-good anthems, and just the right amount of naughtiness, It's a show that guarantees unforgettable memories.

🕒 Thu 8 Jan 8pm

🎫 £28.50* | £31* | £35* Strictly 18+

📍 Auditorium



The Ronnie Scott's Story

Combining projected archive images and live music, The Ronnie Scott's All Stars celebrate the incredible music and history of this music institution.

🕒 Fri 9 Jan 7.30pm

🎫 £24* | £26* | £28*

📍 Auditorium



UK Pink Floyd Experience

Recreating the atmosphere of Floyd live – featuring top-flight musicians, a stunning light show and more than two hours of incredible music.

🕒 Sat 10 Jan 7.30pm

🎫 £25* | £27* | £30*

📍 Auditorium



Big Girls Don't Cry

The Tribute to Frankie Valli & The Four Seasons. With No. 1 hits *Big Girls Don't Cry*, *Walk Like a Man* and *Sherry* – come out tonight as we celebrate all of their hits.

🕒 Sun 11 Jan 2.30pm | 7.30pm

🎫 £25* | £27* | £31*

📍 Auditorium



Northern Live

Keeping the Faith to the original sounds of the underground movement that started on the dance floors in the North.

🕒 Mon 12 Jan 7.30pm

🎫 £26*

📍 Auditorium



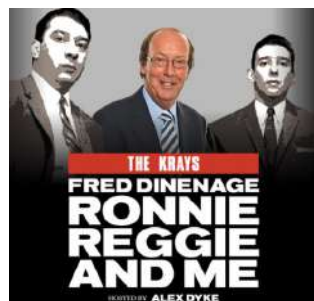
The Simon and Garfunkel Story

Using original film footage, this show tells the story of the origins and rise of Simon & Garfunkel, with a full live band performing all the classic hits.

🕒 Tue 13 Jan 7.30pm

🎫 £24* | £26* | £28*

📍 Auditorium



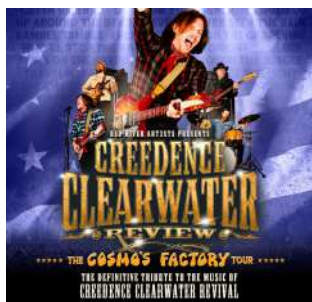
Ronnie, Reggie & Me

Join Fred Dinenage in person as he discloses what it was like to venture into some of Britain's toughest institutions and meet the most foreboding twins in criminal history.

🕒 Wed 14 Jan 7.30pm

🎫 £25* | Ages 16+

📍 Auditorium



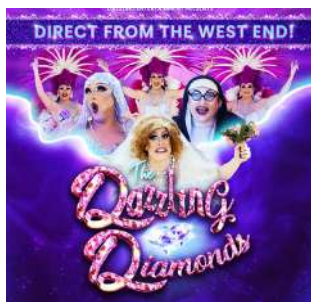
Creedenace Clearwater Review

Sing along to classics like *Bad Moon Rising*, *Proud Mary*, and *Fortunate Son*, while experiencing the authentic sounds of the '60s.

🕒 Fri 16 Jan 7.30pm

🎫 £24* | £26* | £28*

📍 Auditorium



The Dazzling Diamonds – Comedy Drag Show

Featuring three international queens, expect outrageous comedy, sensational live vocals, jaw-dropping dance routines, and iconic hits.

🕒 Sat 17 Jan 7.30pm

🎫 £24* | £26* | £28* | Ages 14+

📍 Auditorium



The Drifters

The Drifters are back performing all their classic hits including *Saturday Night at the Movies*, *Save The Last Dance For Me*, *Under the Boardwalk*, and more.

🕒 Sun 18 Jan 7.30pm

🎫 £32*

📍 Auditorium



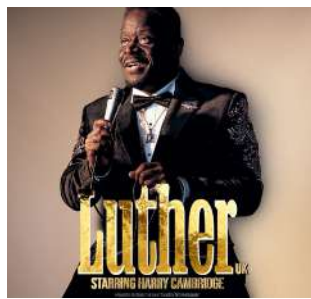
The Sound of Springsteen

Experience the legacy of The Boss and rock the night away!

🕒 Mon 19 Jan 7.30pm

🎫 £30*

📍 Auditorium



Luther UK: Celebrating the Music of Luther Vandross

A high-energy celebration with smooth vocals and soulful magic.

🕒 Tue 20 Jan 7.30pm

🎫 £24* | £26* | £28*

📍 Auditorium



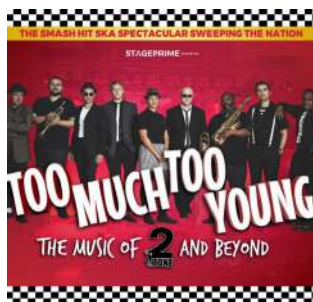
West Ham Legends – Boys of '86

The lads chat about the 40 years since that famous '86 team. They give an insight into the history of the club and reminisce about past glories.

🕒 Wed 21 Jan 7.30pm

🎫 £32.50* | £70* VIP | Ages 14+

📍 Auditorium



Too Much Too Young

This non-stop Ska party brings back to life the vibrant music and subculture that emerged in the late 1970s, intertwining it with present-day themes that still resonate strongly in 2025.

🕒 Thu 22 Jan 7.30pm

🎫 £24* | £26* | £28* | Ages 16+

📍 Auditorium



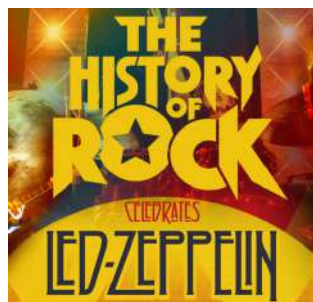
Scummy Mummies: Hot Mess

They'll have you laughing till you wee. From menopause to mansplaining, teenagers to Tinder, no subject is safe.

🕒 Fri 23 Jan 7.30pm

🎫 £24* | Ages 18+

📍 Auditorium



The History of Rock

A rock line up like no other headlined by one of the greatest bands of all time, Led Zeppelin. Experience this iconic music brought back to life by an exceptional band.

🕒 Sat 24 Jan 7.30pm

🎫 £23* | £25* | £29*

📍 Auditorium



One Night in Dublin

The ultimate feel-good Irish music show packed with great songs performed by an award-winning band, covering *Galway Girl*, *Tell Me Ma*, *The Irish Rover*, and more.

🕒 Sun 25 Jan 7.30pm

🎫 £26*

📍 Auditorium



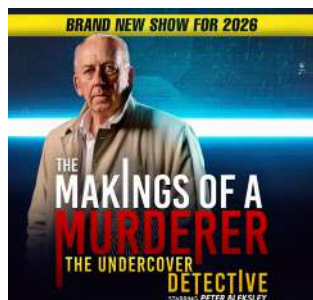
Country Roads

Leave your 9 to 5 worries at the door and get ready as – for one night only – we celebrate the Kings and Queens of country music.

🕒 Mon 26 Jan 7.30pm

🎫 £25* | £27* | £31*

📍 Auditorium



The Makings of a Murderer: The Undercover Detective

Peter Bleksley reveals the harrowing reality behind solving murders and battling the criminal underworld.

🕒 Tue 27 Jan 7.30pm

🎫 £25* | £29* | Ages 14+

📍 Auditorium



The Rocket Man – A Tribute to Elton John

An amazing live band takes you down the *Yellow Brick Road* of glorious Elton John hits, including, *Saturday Night's Alright, Crocodile Rock*, and more.

🕒 Wed 28 Jan 7.30pm

🎫 £25* | £27* | £31*

📍 Auditorium



Go Your Own Way - The Fleetwood Mac Legacy

With hits including *Dreams*, *Don't Stop, Everywhere*, *Rhiannon*, *Gold Dust Woman*, *Little Lies*, *Big Love* and more.

🕒 Thu 29 Jan 7.30pm

🎫 £26*

📍 Auditorium



Musicals: The Ultimate Live Band Sing-Along

A wild, interactive, and seriously rockin' musical theatre experience.

🕒 Fri 30 Jan 7.30pm

🎫 £26*

📍 Auditorium



Mark Watson: Before It Overtakes Us

A frantic and fun-packed show from multi-award-winner, YouTube cult figure, and Radio 4 favourite.

🕒 Sat 31 Jan 7.30pm

🎫 £22.50* | Ages 14+

📍 Auditorium



Chinese New Year Extravaganza

A unique and exciting cultural spectacle! Featuring a team of performers showcasing incredible Chinese performing arts.

🕒 Sun 1 Feb 2.30pm | 7.30pm

🎫 £25*

📍 Auditorium

**NEW SHOWS
ARE BEING
ADDED ALL
THE TIME**

Scan here to
see more



Communities

Queen's Theatre Hornchurch delivers innovative new projects every year. Enabling people to express themselves and their stories through the arts.

By working with our community to unlock creativity, across 24/25 we:



Facilitated

35,023

attendances at our activities

**2024
2025**

Delivered

1,720
sessions

That's
5,127
hours of
workshops



Entertained

181

young people through
holiday activities

Supported

687
volunteer hours



Worked with

31
schools



Employed

49

artists to deliver work
with children and
young people aged
0-19 years

Danced

135

times on
Wednesday
mornings



Partnered with

114

different education,
community and arts
organisations

Hosted over

400

babies and their
parents each week



**Feel like you've
missed out?**

Take a look to see what's
on offer this autumn/
winter and get involved.



Ran

449

youth theatre sessions



Communities

Over **35,000 people** - kids, teens, adults, older folks, and everyone in between - got involved in fun, creative, and inspiring workshops and classes at Queen's Theatre Hornchurch last year. Why not join them? Whether you're looking to try something new, build your creative skills, or simply enjoy some creative fun, there's something for everyone. Take a look at what's on and keep an eye on our website as new events and activities are popping up all the time. Don't miss out, come and be part of the fun!

Q Youth Programme

Aged 6–18? Join over 180 young people each week in our lively youth theatre company - your child's gateway to theatre, creativity, and confidence.

From performing on stage to technical theatre training, masterclasses, and skills-building—we offer fun and exciting opportunities at every step through age-based weekly workshops.

Spaces are limited—sign up now to join the waiting list!

✉ communities@queens-theatre.co.uk

Step 1 | Ages 6–8

Step 2 | Ages 9–11

Step 3 | Ages 11–14

QYC (Queen's Young Company)
Ages 14–18

We believe that finances should never be a barrier to participating in the arts and so we offer bursary places to young people from low-income families, thanks to our supporters.

Baby Sensory

Award-winning development classes designed for babies and their parents. To book email brentwood@babysensory.co.uk or call Shelley on 07930 877009.

Tue + Fri Mornings | various times
Ages 0-13mths

Music Bugs

Sensory and interactive music classes for your baby, toddler and pre-schooler. To book email romford@musicbugs.co.uk or call Sarah on 07517 199869.

Mon mornings + Wed afternoons | various times | Ages 0-4yrs

Outer Limits presents: Writing for the Midscale

A workshop for writers who have had their first full-length play professionally performed. Working with award winning Essex playwright/screenwriter Kenny Emson, explore what it means to write for larger spaces. Including writing exercises, tips on pitching, idea generation, and how to navigate the transition from studio spaces to mid-scale.

Monday 21 July | 10:30am - 12:30pm | Free

Outer Limits presents: Writing Workshops

A series of writing workshops responding to the digital art piece 'Canvey is England's Lourdes'. Writers are invited to an immersive workshop within the installation. Nora's life and story will form the stimulus for creative writing, and an opportunity to explore the history of Essex. Installation listing on page 17. For admission guidelines, please visit our website.

9-10 Sep 10am – 1pm
11 Sep 10am – 6pm | Free | Auditorium

Over 50's Musical Theatre Dance Workout

Dance along to your favourite musical theatre tunes – a fantastic way to keep fit, have fun and meet new friends.

Every Wed 9:45am | 10:45am | 11:45am
£6 per Session | Learning Space

Memory Café

Living with dementia, or caring for someone who is?

You're warmly invited to drop in for a slice of cake, friendly company, fun activities, and helpful information. No need to book—just come along and make yourself at home.

Every other Thu 10:30am-12 noon
FREE | Foyer

UDC Dementia Choir

Love music and singing? Come and join the Upminster Dementia Choir for uplifting sessions filled with music, connection, and joy. Everyone is welcome, whether you're living with dementia or caring for someone who is.

To find out more, email upminsterdementiachoir@gmail.com or call Gillian on 01708 641317.

Every other Thu 10am - 11:30am
£2 | Learning Space

CONTACT US

We'd love to hear from you! For more information on any of our Communities activities please contact us by calling **01708 462373**, emailing communities@queens-theatre.co.uk or visiting queens-theatre.co.uk.



Support Us

Your Theatre at the Heart of the Community

We're proud to be the cultural heart of our region – creating unforgettable shows, live events and learning opportunities inspired by local stories and people. From bold new plays to joyous musicals and inclusive family pantos, we create theatre that connects, inspires and reflects our community.

Last year, **95,709 people** attended performances at QTH, and a further **35,023** took part in workshops, youth programmes and community events.

As a charity, we rely on generous support to bring this work to life and here's just a glimpse of what you've helped make possible:

- A sold-out run of *The SpongeBob Musical*, with over 180 local young people performing on stage and working backstage
- Employed 49 artists to deliver creative work with children and young people
- *Handbagged*, a QTH production delivered in partnership with the National Theatre's Theatre Nation

Partnerships, toured England for 13 weeks and reached over 19,000 people

- Staged *Silence* as part of our British South Asian season of productions, welcoming hundreds of first-time audiences
- Increased our offer of accessible performances; including BSL, relaxed and audio described – so more people could enjoy live theatre
- Commissioned a new play about Canvey Island music legend Wilko Johnson, now touring to three other London venues
- Expanded our support for people living with dementia and their carers, including free fortnightly events
- *Cinderella* featured a deaf and disabled performer in the title role and included five BSL-integrated performances

Thanks to individuals, businesses and funders like you, live theatre continues to thrive at the heart of our community.

And here's how you can support us

There are lots of ways to help keep your local theatre thriving – whether it's a small monthly gift or a lasting dedication, every act of support makes a big difference.

Become a Queen's Angel

Queen's Angels are our amazing regular givers who support our work by donating from as little as £5 a month. You'll also receive advance booking for a wide range of shows.

Or, get even closer to the action by becoming a *Benefactor Plus* and enjoy exclusive invitations to Opening Nights and special supporter events.

Name a Seat – Celebrate and Support

Honour a loved one or mark a special moment by naming a seat in our auditorium. Your personalised plaque will sit alongside theatre legends – and your donation will support creative work on and off stage.

Boost your donation with Gift Aid

If you're a UK taxpayer, Gift Aid allows us to claim an extra 25p for every £1 you give – at no extra cost to you. Just tick the box when donating.

Together, we can keep great theatre at the heart of our community.



Want to find out more?

Pop into our Box Office, give the team a call on **01708 443333**, or email **boxoffice@queens-theatre.co.uk** – we'd love to chat about how you can get involved.

You can also visit the **Support Us** page at **queens-theatre.co.uk** to explore all the ways you can make a difference.

Access

We want every visit to Queen's Theatre Hornchurch to be a welcoming and enjoyable experience. Below you'll find full details about our accessibility services and facilities.

Essential Companions

We have a limited number of free essential companion tickets available for performances. These tickets are for disabled patrons who require essential support during their visit. Please see full T&C's on our website.

Assisted Hearing Headset and Loop Facility

Our Auditorium includes an assisted hearing facility. You can borrow either an inner ear headset or a transmission receiver from the Box Office to amplify the performance sound.

Audio Description (AD)

Audio Described performances include commentary of on-stage action delivered through headphones. When booking online, please select the "Audio Description User" ticket type.

Touch Tours (TT)

Before Live Audio Described performances, we offer Touch Tours, allowing you to explore the stage, set, and costumes prior to the show. To book, please contact the Box Office.

BSL Interpreted Performances

Designed for d/Deaf and hard of hearing individuals who use sign language, BSL interpreted performances feature an interpreter signing all spoken, sung, and heard elements throughout the show. When booking online, choose the 'BSL User' ticket type. Our Box Office holds seats with the best views of the interpreter, contact our team to book these.

Captioned Performances

Captioned performances provide on-screen text of all spoken dialogue and sound effects, displayed on caption screens placed near the stage. These performances are ideal for d/Deaf and hard of hearing patrons who do not use sign language. When booking online, choose the 'Caption User' ticket type.

Dementia-Friendly Performances (DF)

Developed in consultation with people living with dementia, these performances consider sound and lighting, stage action, seating arrangements, signage, and refreshment services.

If the show is in the Main Auditorium, we offer flexible seating options—such as keeping the seat next to you unsold for added space. A quiet area is also available outside the auditorium.

Relaxed Performances (RX)

Relaxed performances are ideal for anyone who would benefit from a calmer environment, particularly those with Autism, sensory or communication disorders, or those who are learning disabled. They incorporate adjusted sound and lighting, mindful staging, and thoughtful front-of-house arrangements. Flexible seating is available in the Main House and a quiet space is provided if needed. Ear defenders are available from our Box Office.

Contact Us

If you have any questions or need information not listed here, please contact our Box Office at 01708 443333 or email boxoffice@queens-theatre.co.uk.

R	33	32	31	30	29	28	27	26	25	24	23	22	21	20	SOUND DESK										14	13	12	11	10	9	8	7	6	5	4	3	2	1	R
Q	34	33	32	31	30	29	28	27	26	25	24	23	22	21	20	19	18	17	16	15	14	13	12	11	10	9	8	7	6	5	4	3	2	1	Q				
P	35	34	33	32	31	30	29	28	27	26	25	24	23	22	21	20	19	18	17	16	15	14	13	12	11	10	9	8	7	6	5	4	3	2	1	P			
O	36	35	34	33	32	31	30	29	28	27	26	25	24	23	22	21	20	19	18	17	16	15	14	13	12	11	10	9	8	7	6	5	4	3	2	1	O		
N	35	34	33	32	31	30	29	28	27	26	25	24	23	22	21	20	19	18	17	16	15	14	13	12	11	10	9	8	7	6	5	4	3	2	1	N			
M	34	33	32	31	30	29	28	27	26	25	24	23	22	21	20	19	18	17	16	15	14	13	12	11	10	9	8	7	6	5	4	3	2	1	M				
L	33	32	31	30	29	28	27	26	25	24	23	22	21	20	19	18	17	16	15	14	13	12	11	10	9	8	7	6	5	4	3	2	1	L					
K	32	31	30	29	28	27	26	25	24	23	22	21	20	19	18	17	16	15	14	13	12	11	10	9	8	7	6	5	4	3	2	1	K						
J	31	30	29	28	27	26	25	24	23	22	21	20	19	18	17	16	15	14	13	12	11	10	9	8	7	6	5	4	3	2	1	J							
H	30	29	28	27	26	25	24	23	22	21	20	19	18	17	16	15	14	13	12	11	10	9	8	7	6	5	4	3	2	1	H								
G	29	28	27	26	25	24	23	22	21	20	19	18	17	16	15	14	13	12	11	10	9	8	7	6	5	4	3	2	1	G									
F	28	27	26	25	24	23	22	21	20	19	18	17	16	15	14	13	12	11	10	9	8	7	6	5	4	3	2	1	F										
E	28	27	26	25	24	23	22	21	20	19	18	17	16	15	14	13	12	11	10	9	8	7	6	5	4	3	2	1	E										
D	25	24	23	22	21	20	19	18	17	16	15	14	13	12	11	10	9	8	7	6	5	4	3	2	1	D													
C	24	23	22	21	20	19	18	17	16	15	14	13	12	11	10	9	8	7	6	5	4	3	2	1	C														
B	23	22	21	20	19	18	17	16	15	14	13	12	11	10	9	8	7	6	5	4	3	2	1	B															
A	22	21	20	19	18	17	16	15	14	13	12	11	10	9	8	7	6	5	4	3	2	1	A																

Stage

How To Book

🖱️ **Online**
queens-theatre.co.uk

☎️ **By phone or in person**
01708 443333
Queen's Theatre Hornchurch
Billet Lane | RM11 1QT
10am – 5pm | Monday – Saturday
10am – 3pm | Saturday with no evening show

As a charity, we rely on generous donors and supporters to make our work possible. Please consider adding a donation when booking your tickets.



Calendar

August 2025

Friday 1	Sweet and Sour	19:30
Saturday 2	The Glam Rock Show	19:30
Thursday 14	Memory Cafe	10:30 – 12:00
Thursday 28	Memory Cafe	10:30 – 12:00
	The Singing Mermaid	11:00 & 14:00 Relaxed Performance
Friday 29	The Singing Mermaid	11:00 & 14:00
	Ms Amber Guity's Drag Bingo	19:30
Saturday 30	The Singing Mermaid	11:00 & 14:00

September 2025

Friday 5	Comedy Club	20:00
Saturday 6	Dysbiosis	14:00, 17:00, & 20:00
Sunday 7	Light Fantastic!	12:30 & 14:30
Thursday 11	Memory Cafe	10:30 – 12:00
Friday 12	The Rock Anthems Show	19:30
Saturday 13	Living Things Wildlife Show	10:30
	Rat Pack Live!	14:30 & 19:30
Sunday 14	A Beautiful Noise with Fisher Stevens	19:30
Monday 15	Lipstick on Your Collar	19:30
Tuesday 16	Sherlock Holmes and the Hunt for Moriarty	19:30
Wednesday 17	Down Memory Lane	14:30
	Sherlock Holmes and the Hunt for Moriarty	19:30
Thursday 18	Sherlock Holmes and the Hunt for Moriarty	13:00 & 18:30
Friday 19	Sherlock Holmes and the Hunt for Moriarty	19:30
Saturday 20	Sherlock Holmes and the Hunt for Moriarty	14:30 & 19:30
Monday 22	Psychic Sally	19:30
Tuesday 23	Su Pollard: Fully Charged	19:30
Wednesday 24	An Evening With Harry Redknapp	19:30
Thursday 25	Memory Cafe	10:00 – 13:00
Saturday 27	Family Knees Up	10:30
Monday 29	ELE Playwriting Group – Fresh Scripts	19:30
Tuesday 30	Surinderella	19:00

October 2025

Wednesday 1	Surinderella	19:00 BSL
Thursday 2	Surinderella	13:00 & 18:00
Friday 3	Surinderella	19:00
Saturday 4	Surinderella	12:00 TT , 13:00 Live AD & 19:00
Sunday 5	Surinderella	13:00
Tuesday 7	Teechers	19:30
Wednesday 8	Teechers	13:30 & 19:30
Thursday 9	Memory Cafe	10:30 – 12:00
	Locomotive for Murder	19:30
Tuesday 14	Birth of the Cool	19:30
Wednesday 15	Down Memory Lane	14:30
	Comedy Club	20:00
Thursday 16	Di and Viv and Rose	19:30
Friday 17	Director Q&A	18:30
	Di and Viv and Rose	19:30 BSL
Saturday 18	Di and Viv and Rose	14:30 & 19:30
Monday 20	Di and Viv and Rose	19:30
Tuesday 21	Di and Viv and Rose	18:30 TT & 19:30 Live AD

Wednesday 22	Di and Viv and Rose	19:30
Thursday 23	Memory Cafe	10:00 – 13:00
	Di and Viv and Rose	13:30 & 18:30
Friday 24	Di and Viv and Rose	19:30
Saturday 25	Di and Viv and Rose	14:30 & 19:30
Monday 27	Natural History Museum presents Dinosaurs Live!	12:30 & 15:30
Tuesday 28	Pop Princesses	13:30 & 18:30
Wednesday 29	Ministry of Science	13:30
	WHALE	20:00
Friday 31	Stick Man	16:30

November 2025

Saturday 1	Stick Man	10:30 & 13:30
	Ms Amber Guity's Drag Bingo	19:30
Sunday 2	Stick Man	10:30 & 13:30
Monday 3	Murder Mystery Night	19:30
Tuesday 4	Strange But True Crime	19:30
Wednesday 5	Most Haunted Live	19:30
Thursday 6	Memory Cafe	10:30 – 12:00
	Shock Horror: A Ghost Story	19:30
Friday 7	Shock Horror: A Ghost Story	19:30
Saturday 8	Shock Horror: A Ghost Story	19:30
Tuesday 11	Murder Mystery Evening	19:30
Wednesday 12	Down Memory Lane	14:30
	Comedy Club	20:00
Thursday 13	The Funny Mummy	19:30
Wednesday 19	Jack and the Beanstalk (Preview)	18:30
Thursday 20	Memory Cafe	10:30 – 12:00
	Jack and the Beanstalk (Preview)	18:30
Friday 21	Jack and the Beanstalk (Preview)	18:30
Saturday 22	Jack and the Beanstalk (Preview)	14:00
	Jack and the Beanstalk Opening Night	18:30 BSL
Monday 24	Christmas Memories	14:00
Tuesday 25	Jack and the Beanstalk	13:00 & 18:30
Wednesday 26	Jack and the Beanstalk	10:00
	Winter Fundraising Quiz Night	19:30
Thursday 27	Jack and the Beanstalk	10:00
Friday 28	Jack and the Beanstalk	10:00 & 18:30
Saturday 29	Jack and the Beanstalk	12:30 TT , 14:00 AD , & 18:30
Sunday 30	Jack and the Beanstalk	12:30 & 17:00

December 2025

Monday 1	Magic of Motown	19:30
Tuesday 2	Magic of Motown	19:30
Wednesday 3	Jack and the Beanstalk	10:00 & 18:30 BSL
Thursday 4	Memory Cafe	10:30 – 12:00
	Jack and the Beanstalk	10:00 & 14:00
Friday 5	Jack and the Beanstalk	10:00 & 18:30
Saturday 6	Baby Broadway Christmas Special	09:45 & 11:00
	Jack and the Beanstalk	14:00 & 18:30
Sunday 7	Jack and the Beanstalk	12:30 & 17:00
Monday 8	Down Memory Lane	14:30
	Step into Christmas	19:30
Tuesday 9	Jack and the Beanstalk	10:00
Wednesday 10	Jack and the Beanstalk	10:00 & 18:30
Thursday 11	Jack and the Beanstalk	10:00 & 18:30
Friday 12	Jack and the Beanstalk	10:00 Schools BSL & 18:30

Saturday 13	The Elves and the Shoemaker	10:30
	Jack and the Beanstalk	14:00 & 18:30
Sunday 14	Jack and the Beanstalk	12:30 & 17:00
Monday 15	80's Live	19:30
Tuesday 16	Jack and the Beanstalk	13:00 School CAP & 18:30 CAP
Wednesday 17	Jack and the Beanstalk	10:00 & 18:30
Thursday 18	Memory Cafe	10:30 – 12:00
	Jack and the Beanstalk	13:00 Dementia Friendly
	Jack and the Beanstalk	17:30 Relaxed Performance
Friday 19	Jack and the Beanstalk	14:00 & 18:30
Saturday 20	The Elves and the Shoemaker	10:30
	Jack and the Beanstalk	14:00 & 18:30
Sunday 21	Jack and the Beanstalk	12:30 & 17:00
Monday 22	The Last Days of Disco	19:30
Tuesday 23	Jack and the Beanstalk	14:00 & 18:30
Wednesday 24	Jack and the Beanstalk	11:00 & 15:30
Friday 26	Jack and the Beanstalk	14:00 & 18:30
Saturday 27	Jack and the Beanstalk	14:00 & 18:30
Sunday 28	Jack and the Beanstalk	12:30 & 17:00
Monday 29	Jack and the Beanstalk	14:00 BSL & 18:30
Tuesday 30	Jack and the Beanstalk	14:00 & 18:30
Wednesday 31	Jack and the Beanstalk	11:00 & 15:30

January 2026

Friday 2	Jack and the Beanstalk	14:00 & 18:30
Saturday 3	Jack and the Beanstalk	14:00 & 18:30
Wednesday 7	Comedy Club	20:00
Thursday 8	Dreamboys	20:00
Friday 9	The Ronnie Scott's Story	19:30
Saturday 10	UK Pink Floyd Experience	19:30
Sunday 11	Big Girls Don't Cry	14:30 & 19:30
Monday 12	Northern Live	19:30
Tuesday 13	The Simon & Garfunkel Story	19:30
Wednesday 14	Down Memory Lane	14:30
	Ronnie, Reggie & Me with Fred Dinenage	19:30
Friday 16	Creedence Clearwater Review	19:30
Saturday 17	Dazzling Diamonds Comedy Variety Drag Show	19:30
Sunday 18	The Drifters	19:30
Monday 19	The Sound of Springsteen	19:30
Tuesday 20	Luther UK: Celebrating The Music of Luther Vandross	19:30
Wednesday 21	West Ham Legends: The Boys of 86'	19:30
Thursday 22	Too Much Too Young	19:30
Friday 23	Scummy Mummies: Hot Mess	19:30
Saturday 24	The History of Rock	19:30
Sunday 25	One Night In Dublin	19:30
Monday 26	Country Roads	19:30
Tuesday 27	The Makings of a Murderer: The Undercover Detective	19:30
Wednesday 28	The Rocket Man - A Tribute to Elton John	19:30
Thursday 29	Go Your Own Way - The Fleetwood Mac Legacy	19:30
Friday 30	Musicals The Ultimate Live Band Sing-a-long	19:30
Saturday 31	Mark Watson: Before It Overtakes Us	19:30

February 2026

Sunday 1	Chinese New Year Extravaganza	14:30 & 19:30
----------	-------------------------------	---------------



The SpongeBob Musical - 2024, QTH -
Photo: Zbigniew Kotkiewicz

Sandwiches, toasties, and paninis
Tempting cakes, sweet treats, and drinks
Afternoon Tea available to book



QCafé

Whether you're popping in on your lunch break, having a delicious coffee and cake or celebrating something special with an Afternoon Tea, QCafé offers the perfect setting. Relax in our warm, inviting atmosphere and let our friendly team take care of you – every visit is a moment to savour.

Opening Hours:

Day: Monday – Saturday 10am – 3pm

Evening: From one hour before all main house performances until the end of the interval

QBar

Step into QBar for a pre-show toast or a celebratory drink after the curtain falls. We have chilled lagers, a selection of spirits, and a new exciting range of 0% options. Don't miss our locally sourced craft beers and wines – including favourites from New Hall Wine and Brentwood Brewery – QBar is the place to be.

Opening Hours:

One hour before every performance

When you are finished with this brochure please recycle it.